

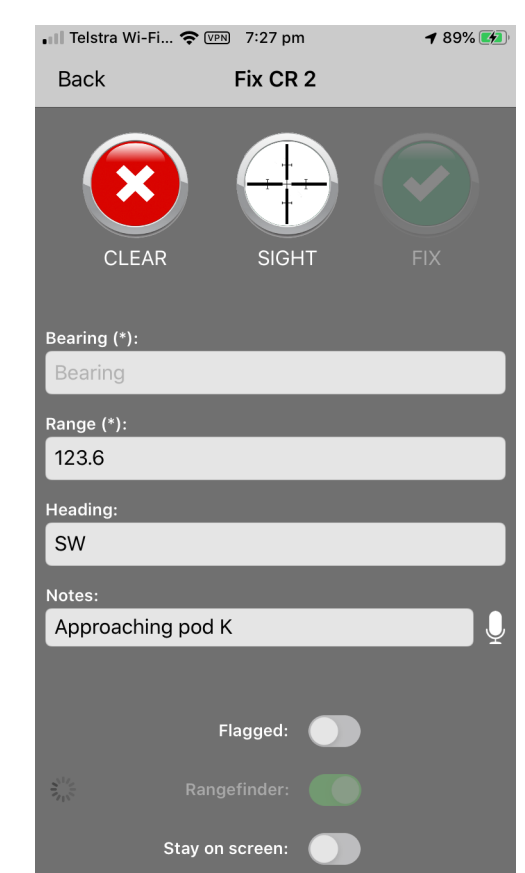
## FEATURES

- Compact format for field work – look, no laptop!
- Developed by researchers for researchers
- Proven over several years in humpback study
- Configure ethogram, roles, modifiers, species, data items (per behavior class), control variables, environment parameters etc, prior to use
- Record precise tracks, where behaviors occurred and environmental parameters
- Latitude/longitude calculated on the fly from GPS, compass bearing, range and local magnetic declination
- Auto timestamp with observer position, water temperature and depth; these variables can also be recorded automatically twice a minute
- All observations tagged with name of observer
- Concurrent focal, scan, behavior and ad-lib sampling as per Martin and Bateson's classic
- Record multiple roles and modifiers for a behaviour
- Behaviors can be events or states
- View map of tracks and behaviors as you go and tap on an event to see its data including speed and course
- Record notes any time – voice/vocalization, dictation or manual entry
- Each behavior can have a sample video, image or sound clip
- Place photos onto maps in bulk even without GPS metadata
- Review and correct data any time; strong data validation on entry
- Onboard database with cloud or laptop backup for data security
- Effortless transfer of any amount of data to ArcGIS, QGIS in structured form; click on a fix to display associated data including speed, course, water temperature, depth and notes
- Export observations to spreadsheet and KML (Google Earth)
- Facility to merge onboard data from team members at the same or different locations
- Companion citizen science version also available for team work; studies are lockable to prevent changes to configuration
- Operates without Internet
- Supports a wide range of studies of many different marine and terrestrial species
- Fully supported and used by the development team
- Complete beta version for iPhone available at [behayve.com](http://behayve.com) as from start of conference: we want your suggestions!
- App Store version coming soon: register interest here or at [behayve.com](http://behayve.com)

# Behayve

## SMARTPHONE APP RECORDS AND MAPS ANIMAL TRACKS, BEHAVIORS AND ENVIRONMENT

- \* Configurable
- \* Concurrent focal, scan and ad-lib sampling
- \* Multiple roles, modifiers, mutual exclusions
- \* GIS integration
- \* Wireless links to instruments and rangefinder
- \* Convenience of size
- \* Simple and intuitive to use



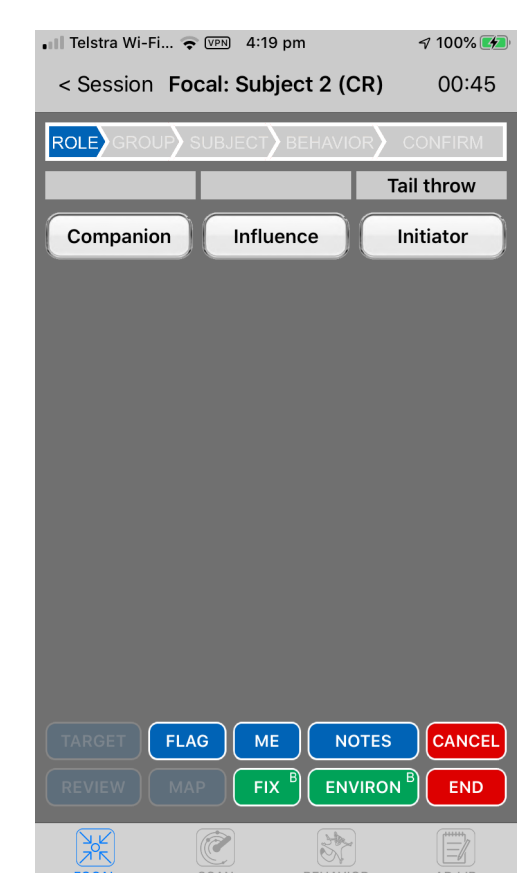
Wireless auto range



Auto bearing



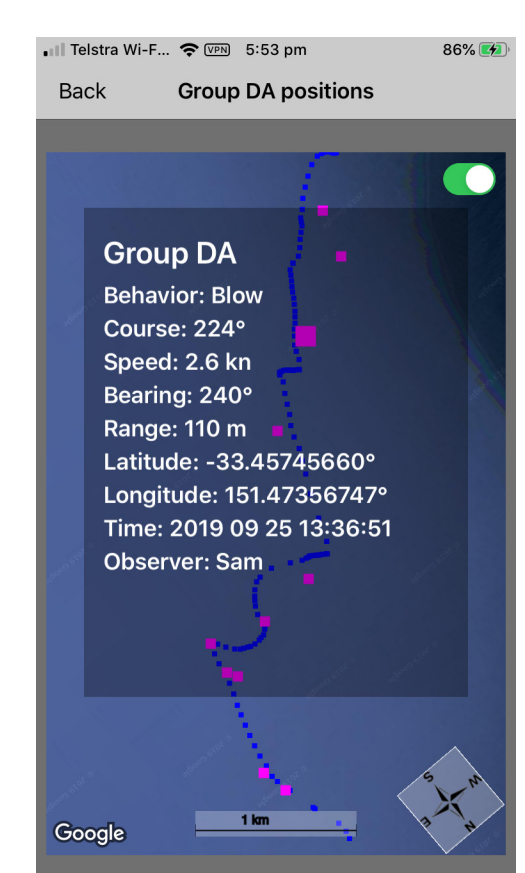
Select behavior



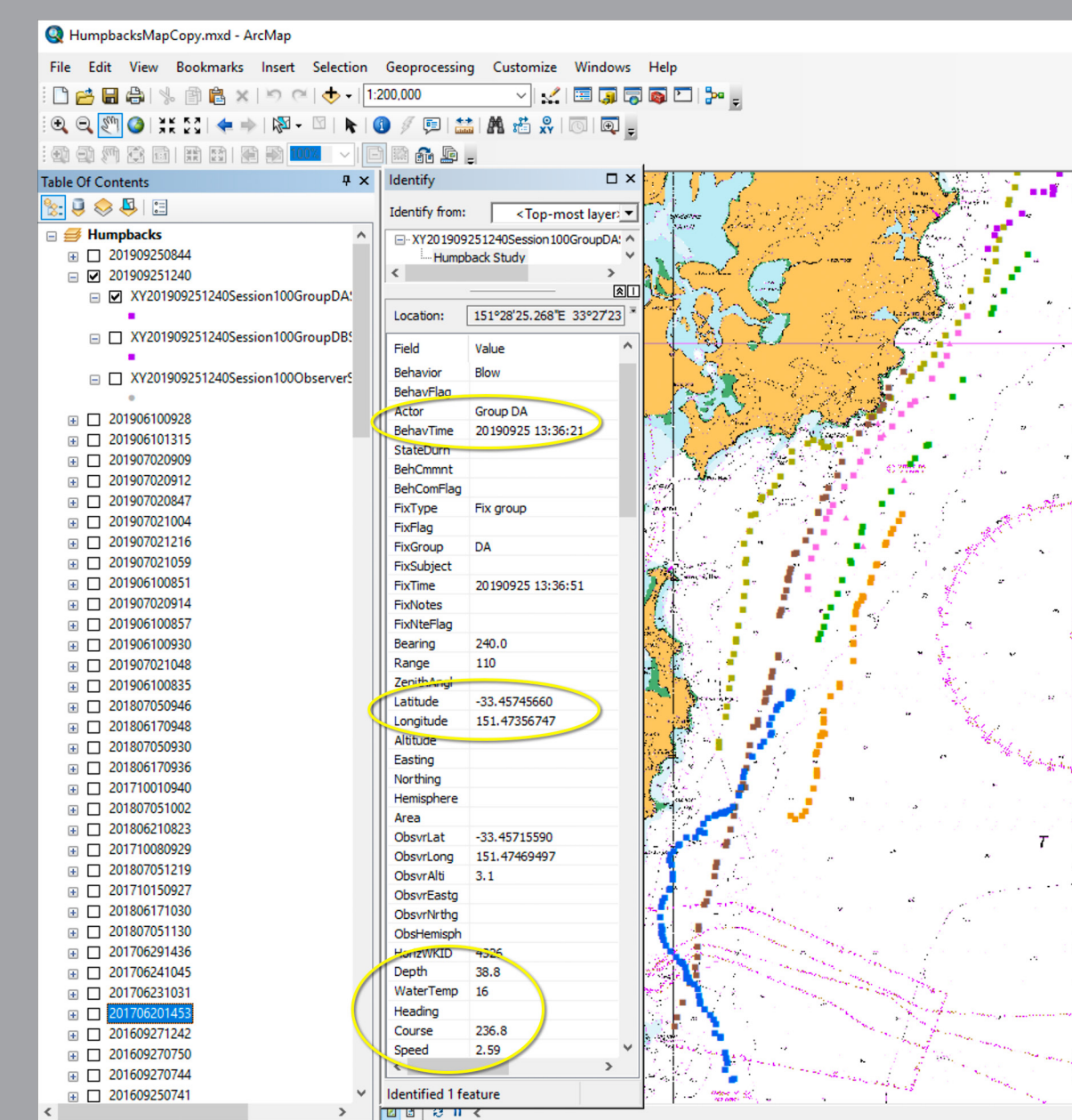
Select role



Review and amend



View tracks and behaviors in real time; tap pink fixes for data; observer track in blue



Auto transfer to GIS; click on an observation to pop up associated data; optionally show observer track

